

## A-level Art transition project: 30 day challenge

### Research and Analysis



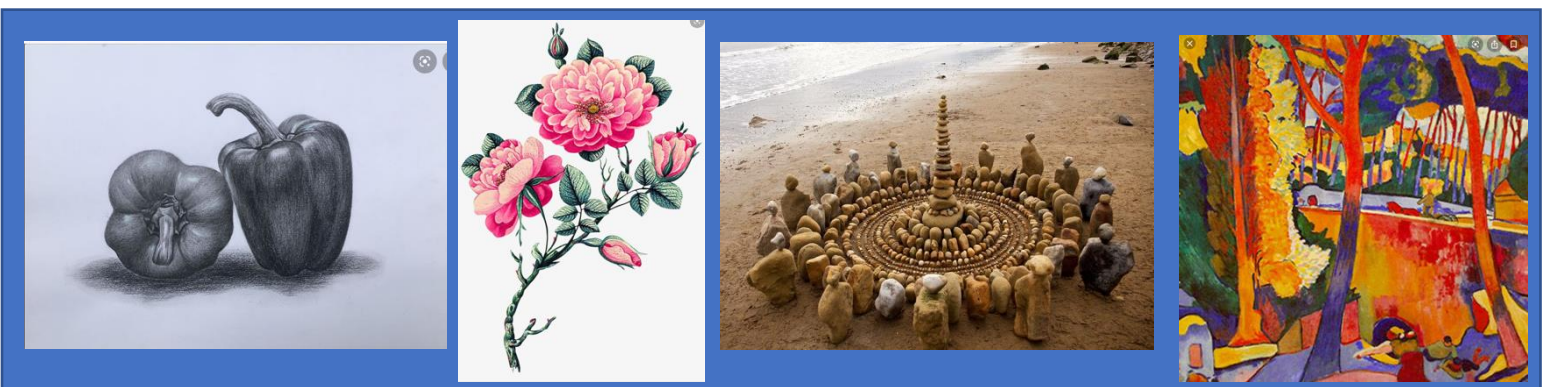
- 1) Complete a timeline of Art from prehistory to modern day. Include different cultures, key Art movements and artists.
- 2) Visit [www.tate.org.uk](http://www.tate.org.uk) and familiarise yourself with the wealth of information available (you can view the collection, find information about art and artists, view the archive etc). Create a presentation about the information available through the Tate website and also in the galleries. Include information about specific tools that you have found most useful.
- 3) From your Tate research, select one artist and analyse their work, include studies (these could include small focused areas and full page studies)
- 4) Create your own piece in the style of the artist above, work from your own primary sources.
- 5) Research Rosie James's Art textile images of crowds, discuss her use of line, movement and pattern
- 6) Create your own versions of Rosie James's images using an appropriate medium
- 7) Imagine you are working on a project, which artists might you study after Rosie James to develop your ideas? Create a mind map and mood board of possible artists
- 8) Write a paragraph about the artist you have selected; explain why you chose this artist and how you could incorporate their ideas to develop Rosie James's style
- 9) Create your own combined piece for Rosie James and your selected artist using relevant media.
- 10) Create a virtual exhibition with the theme 'diversity'. Select art works from a range of different artists (one piece per artist). You can include works from across any disciplines ie painting, photography, film, sculpture, textiles, installation etc). Display your exhibition as a PowerPoint presentation. Create an information booklet to accompany the exhibition. This should provide information about the artist and the piece displayed (media, scale etc) and an explanation of why each piece has been included in the exhibition (how it fits the theme 'diversity')

Think about your presentation, be creative!

### Practical Studies

<b>11</b>	People in a natural environment	<b>21</b>	Create your own Op Art (look at Bridget Riley for inspiration)
<b>12</b>	A street scene	22	Create a piece of social/political Art that explores a theme you feel strongly about
<b>13</b>	Jelly fish	23	A landscape in the style of the Fauves
<b>14</b>	Abstract fruit	24	Detailed tonal study of a still life object of your choice
<b>15</b>	A portrait in the style of Renaissance painting	25	Create a surreal image by combining 2 unrelated items
<b>16</b>	A contemporary style still life	26	A response to the theme 'light'

17	Decay	27	Studies of bell peppers (look at them from different angles, cut them and study the inside etc)
18	A response to the theme diversity (look back at your exhibition for inspiration)	28	An interpretation of 'rip, burn, transform'
19	Botanical study of a flower	29	A response to the theme 'time'
20	Create an outside installation (you may wish to research land art to inspire you)	30	A portrait of an influential person (someone who has personally influenced you)



Work should be completed on an appropriate scale (this may vary for different pieces) and presented in an appropriate format (digital work must be printed). All pieces need to be completed and submitted at the start of year 12.

Please contact Mr Pilcher [jonathanpilcher@universtiyofkentacademiestrust.org.uk](mailto:jonathanpilcher@universtiyofkentacademiestrust.org.uk) to request the TEAMS code for the group

Media	Techniques
Tonal pencil	Tonal shading and blending
Colour pencil	Mark making
Watercolour	Dot work
Acrylic	Stitching
Oil paint	Collage
Oil pastel	Printing
Chalk pastel	Sculpture
Charcoal	Painting with charcoal or pastel and water
Digital drawing	Painting with oil pastel and white spirit
Photography and digital/physical editing	Wet on wet
Mixed media	Line drawing
Threads and fabrics	Perspective
Biro	Land art
Fine liner	Installation
Printing inks	Encaustic (melted wax)

Explore a broad range of media and techniques. You must include at least some tonal drawings. Photography should be the predominant media in no more than 3 images.

Work from primary sources where possible.